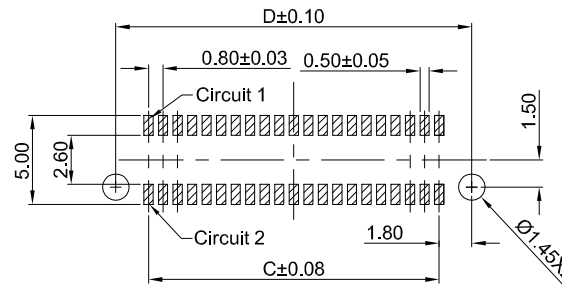
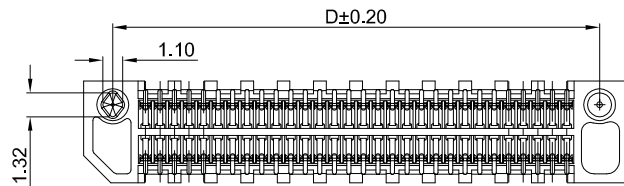
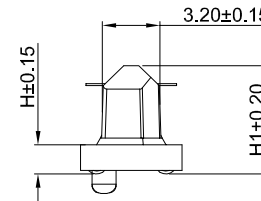
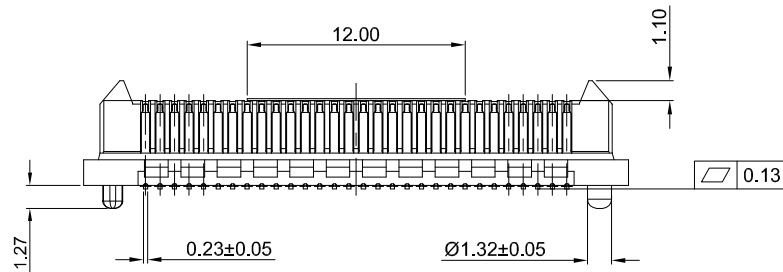


**GT-B0803 M S V XX -XX X XX 01**

- G-Switch**
- Series No**
- M-Male**
- Termpoint**  
S-SMT
- Angle**  
V-180°
- Terminal Plating**  
04-Au10u"
- Housing Colour**  
B-Black
- Pin Q' PY**  
10~200
- Height**  
20-2.00mm  
30-3.00mm  
50-5.00mm  
80-8.00mm  
90-9.00mm



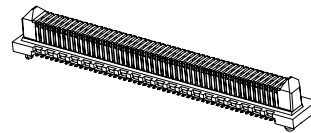
**RECOMMEND PCB LAYOUT**  
TOLERANCE:±0.05

**G-Switch Specification:**

- 1.Current rated: 1.4A AC/DC
- 2.Voltage rating: 225V AC/DC
- 3.Withstanding voltage: 675V AC
- 4.Contact resistance: 15mΩ Max.
- 5.Insulation resistance: 5000MΩ min
- 6.Durability cycle: 30 Cycles
- 7.Removal force: 0.01kgf/Pin min
- 8.Operating temperature range: -55°C ~ +125°C

**Ordering Information:**

Circuit	Dimensions(mm)				Height	H	H1	
	A	B	C	D				
10	10.00	8.20	3.20	6.80				
20	14.00	12.20	7.20	10.80	2.00	1.61	5.97	
22	14.80	13.00	8.00	11.60	3.00	2.61	6.97	
24	15.60	13.80	8.80	12.40	5.00	4.61	8.91	
26	16.40	14.60	9.60	13.20	8.00	7.61	11.91	
30	18.00	16.20	11.20	14.80	9.00	8.61	12.91	
40	22.00	20.20	15.20	18.80				
50	26.00	24.20	19.20	22.80	Mated height(mm)			
60	30.00	28.20	23.20	26.80				
70	34.00	32.20	27.20	30.80	Mate(H)	Femate(H)		
80	38.00	36.20	31.20	34.80		5.0	7.0	9.0
100	46.00	44.20	39.20	42.80	2.0	7.00	9.00	11.00
120	54.00	52.20	47.20	50.80	3.0	8.00	-	-
140	62.00	60.20	55.20	58.80	5.0	10.00	12.00	14.00
150	66.00	64.20	59.20	62.80	8.0	13.00	15.00	17.00
200	86.00	84.20	79.20	82.00	9.0	14.00	16.00	18.00



SCALE: 1:1 UNIT: mm  
SIZE: A4

Unless otherwise  
General Tolerance:  
X ±0.40  
X.x ±0.30  
X.xx ±0.20  
X\* ±5°  
X.x\* ±3°

Title: BTB 0.80mm Pitch 180° Dual Rows  
SMT Type Mate Connector

Molde Code: GT-B0803MSVXX-XXXXX01

DRAWN	CHECKED	APPROVED	DATE
Hu	Chen	Chen	2022.12.28



REV: A0 SHEET: 1/1

2	CONTACT	PHOSPHOR BRONZE	Au10u" ON CONTACT AREA
1	HOUSING	LCP,94V-0	BLACK
NO.	PART NAME	MATERIAL	REMARK