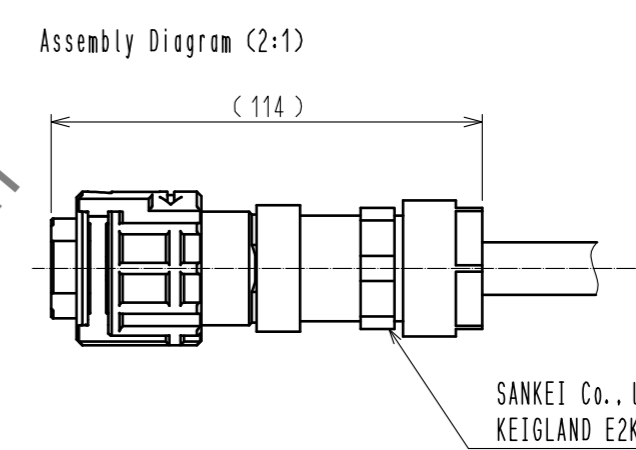
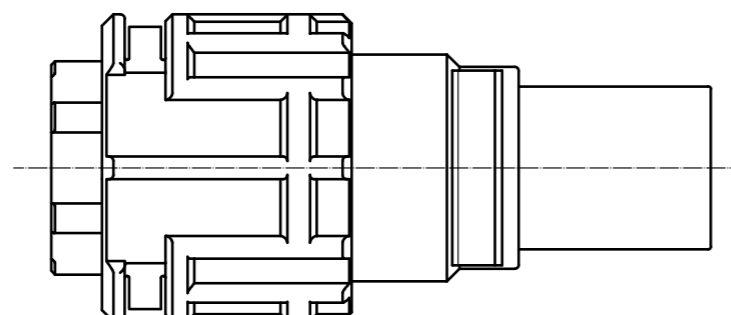
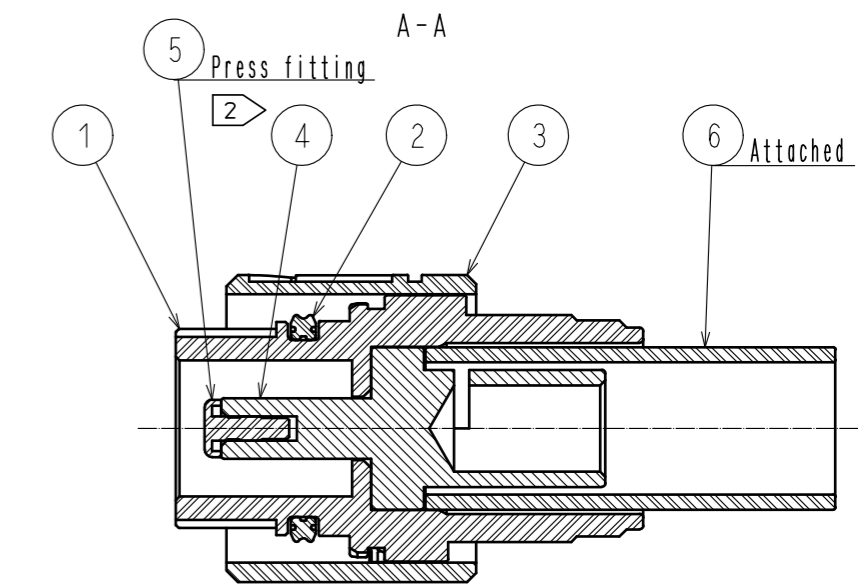
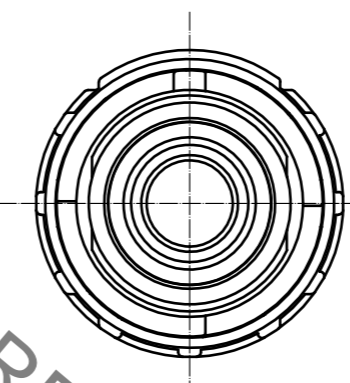
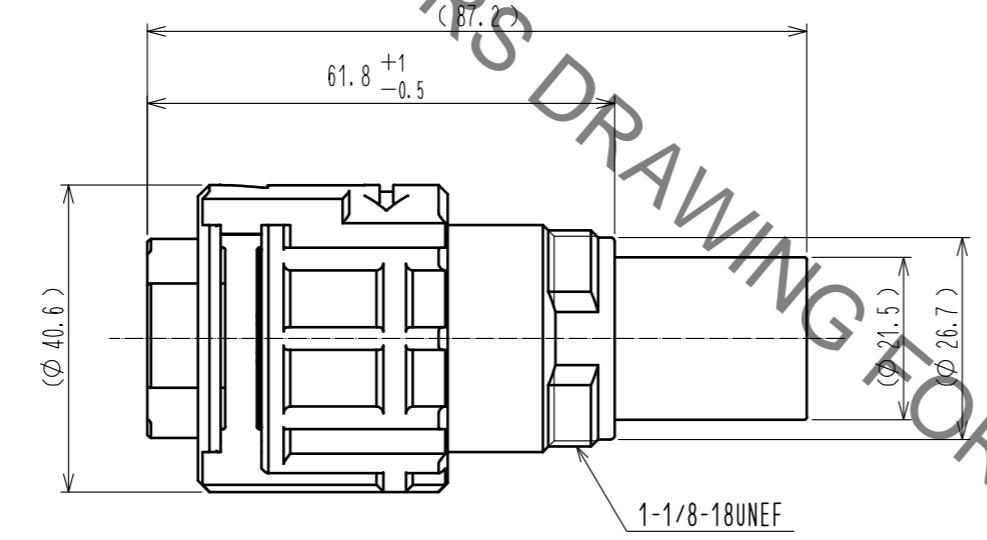
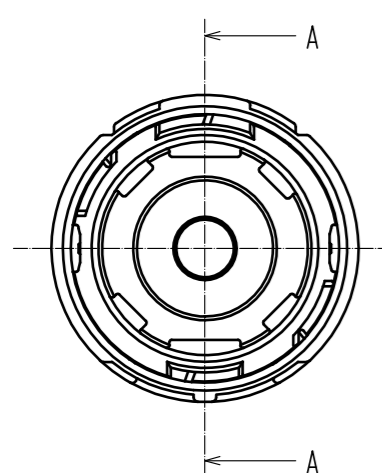
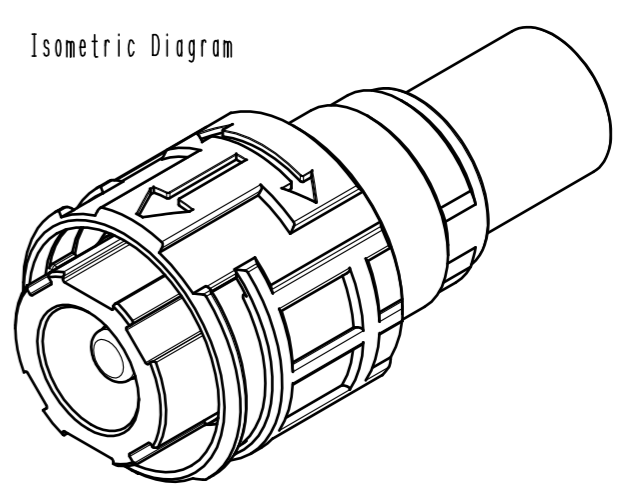
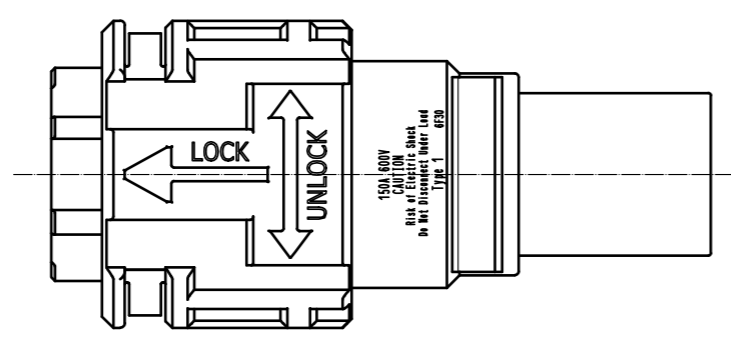


Jan.1.2022 Copyright 2022 HIROSE ELECTRIC CO., LTD. All Rights Reserved.
In case of consideration for using Automotive equipment / device which demand high reliability, kindly contact our sales window correspondents.



- Notes
- ① Please attach Keigland E2KD 1620 of SANKEI CO., LTD to this product before use.
 - ② The contact will be sent with Ref. No. ⑤ press-fitted to Ref. No. ④.
 - ③ 3. Rotation examples of ref no. ① and ③ are shown.
 - ④ 4. Recommended Crimping Tool: JIS-C-9711 IZUMI CO., LTD REC-Li150.
 - ⑤ 5. Make sure that the Keigland shell is tightened to the end of the screw. The recommended tightening torque is 3N·m. Furthermore, to prevent loosening, it is recommended that thread-locking fluid be used.
 - ⑥ 6. This product is UL certified. (File E481344)
 - ⑦ 7. Dropouts and the like may occur, so when mated, Please do not leave with the mating guide of the opposite side and the arrow marks out of alignment.

WARNING . This product is not hot pluggable.

NO.	MATERIAL	FINISH	REMARKS	NO.	MATERIAL	FINISH	REMARKS
3	PBT	(Black)	UL94V-0	6	PBT	(Black)	UL94V-0
2	Fluorosilicone rubber	(Black)		5	PBT	(Black)	UL94V-0
1	PBT	(Black)	UL94V-0	4	Copper	Silver plating	3μm

UNITS	SCALE	COUNT	DESCRIPTION OF REVISIONS	DESIGNED	CHECKED	DATE
mm	1 : 1	2	DIS-C-00002363	TP. KOMATSU	YH. YAMADA	18. 08. 03

APPROVED	CHECKED	DESIGNED	DRAWN	DRAWING NO.	PART NO.	CODE NO.
·EJ. KUNII	·EJ. KUNII	·TY. TAKAHASHI	·TY. TAKAHASHI	EDC-119508-00-00	EM30M-WBP-1PCA-K	CL138-0074-0-00