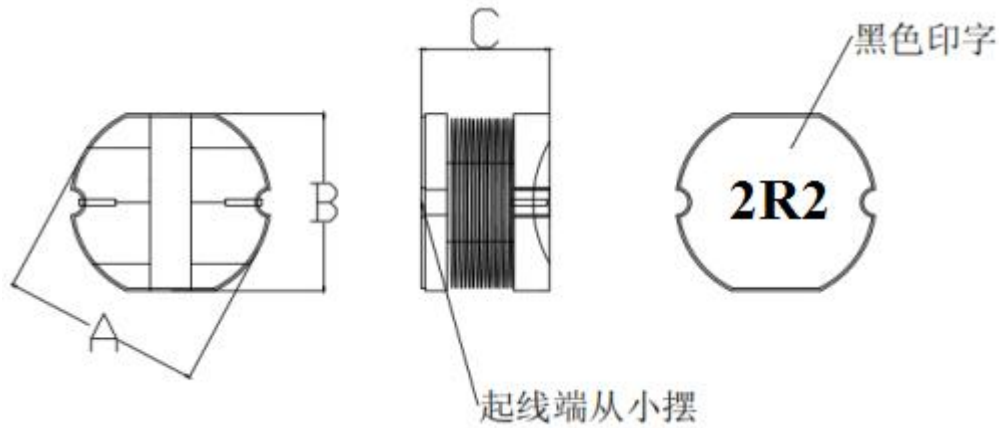


1 Product Identification

GDCD 5845 - 2R2 M T F
 ① ② ③ ④ ⑤ ⑥

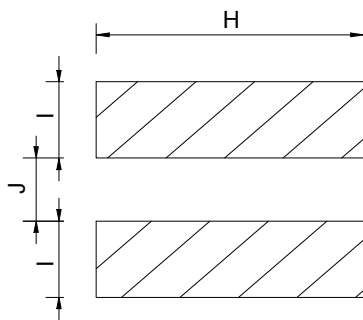
- ① Product Symbol
- ② Dimensions (See two)
- ③ Inductance Value (2R2:2.2μH)
- ④ Inductance Tolerance (J:±5%;K:±10%; M:±20%; N:±30%)
- ⑤ Packaging Style (B: Bulk; T: Tape & Reel)
- ⑥ Lead Free

2 Appearance, Dimensions(mm)



A	B	C
5.8±0.3	5.2±0.3	4.5±0.3

LAND PATTERN DIMENSIONS



/	mm
H	5.4
I	2.2
J	1.6



3 Specifications

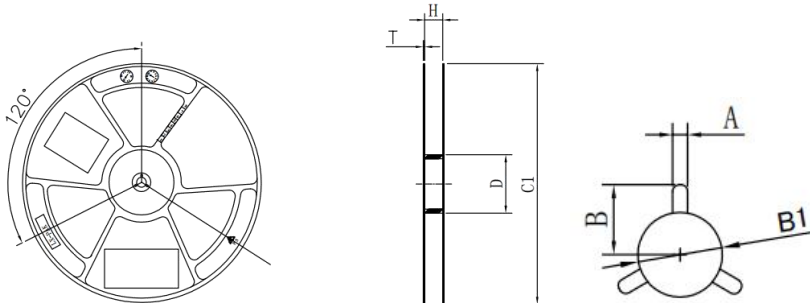
Part No.	Inductance L0(uH) $\pm 20\%$	L Test Freq.	RDC (m Ω)Max	Rated Current (A)Max
GDCD5845-2R2MTF	2.2	100KHz, 0.3V	25	4.5
GDCD5845-3R3MTF	3.3	100KHz, 0.3V	40	3.0
GDCD5845-4R7MTF	4.7	100KHz, 0.3V	45	2.8
GDCD5845-6R8MTF	6.8	100KHz, 0.3V	60	2.5
GDCD5845-100MTF	10.0	1KHz, 0.3V	80	2.3

※ Note

*Rated current is the DC current that reduces the initial inductance by 30% or when the temperature rises $\Delta T = 40^{\circ}\text{C}$

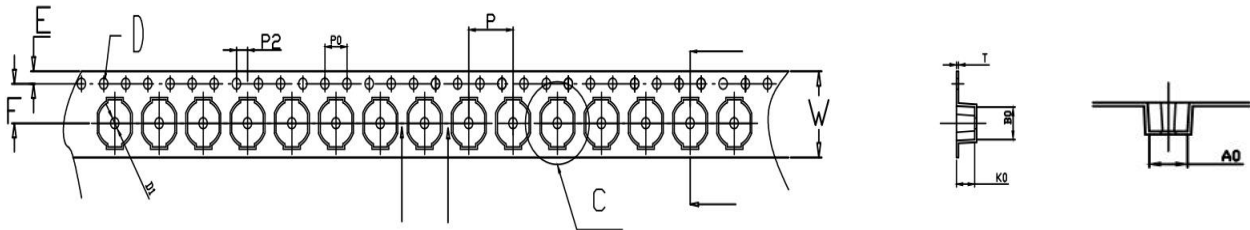
4 Packaging

(1) Dimensions of Reel (mm)



	Size (mm)
C1	330 ± 3.0
H	12.8 ± 0.5
A	2.5 ± 0.3
B	10.75 ± 0.3
B1	13+0.5/-0.2
T	2.0 ± 0.2
D	100 ± 1.0

(2) Dimensions of Tape (mm):



W	A0	B0	K0	P	F	E	D	P0	P2	T	Packaging quantity
12.0 ± 0.3	5.5 ± 0.1	6.2 ± 0.1	4.8 ± 0.1	8.0 ± 0.1	5.5 ± 0.1	1.75 ± 0.1	1.5+0.1 / -0.0	4.0 ± 0.1	2.0 ± 0.1	0.40 ± 0.05	1500PCS/REEL