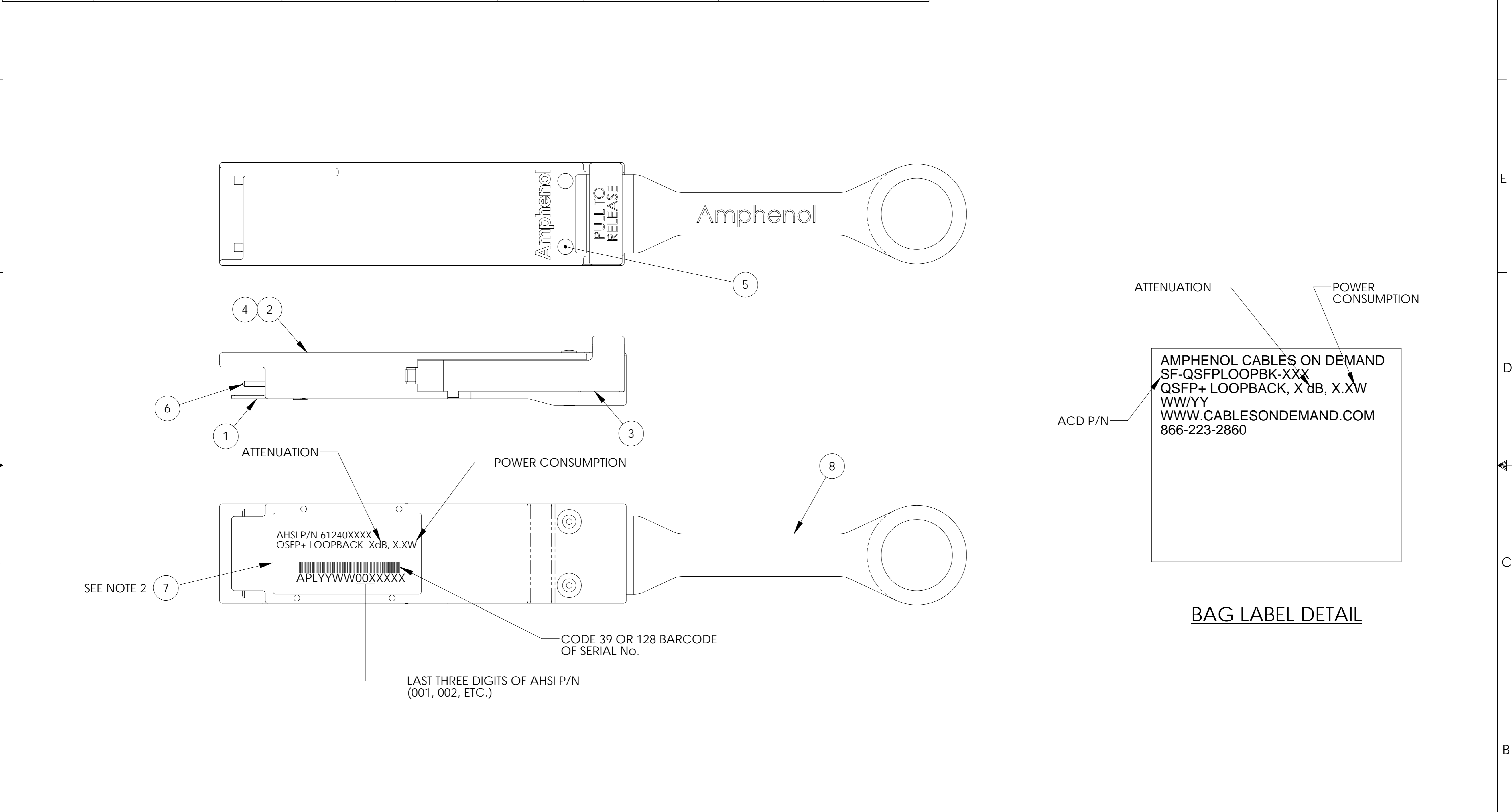


THE INFORMATION CONTAINED IN THIS DRAWING IS THE SOLE PROPERTY OF AMPHENOL INTERCONNECT PRODUCTS CORP. ANY REPRODUCTION OR DISCLOSURE, TO THIRD PARTIES, IN PART OR WHOLE, WITHOUT THE EXPRESS WRITTEN PERMISSION OF AMPHENOL INTERCONNECT PRODUCTS CORP. IS PROHIBITED.

| AHSI P/N | DESCRIPTION | POWER CONSUMPTION | ATTENUATION | LANYARD COLOR | ACD P/N | EPROM REV | EYE & JITTER TEST |
|-----------|------------------------|-------------------|-------------|---------------|-------------------|-----------|-------------------|
| 612400001 | QSFP LOOPBACK W/MODSEL | 1.5W | 0 dB | BLUE | SF-QSFPLOOPBK-001 | D | NO |
| 612400002 | QSFP LOOPBACK W/MODSEL | 0.0W | 0 dB | BLUE | SF-QSFPLOOPBK-002 | D | NO |
| 612400003 | QSFP LOOPBACK W/MODSEL | 1.5W | 3 dB | BLUE | SF-QSFPLOOPBK-003 | D | YES |

| REVISIONS | | | |
|-----------|---------------------------|-------|----------|
| REV. | DESCRIPTION | DATE | APPROVED |
| A | NEW RELEASE PER EO 302892 | 05/12 | DEC |
| B | REVISED PER ECN 304559 | 08/13 | DEC |
| C | REVISED PER ECN 304930 | 12/13 | DEC |
| D | REVISED PER ECN 305274 | 04/14 | DEC |



ATTENUATION
POWER CONSUMPTION
ACD P/N

AMPHENOL CABLES ON DEMAND
SF-QSFPLOOPBK-XXX
QSFP+ LOOPBACK, X dB, X.XW
WW/YY
WWW.CABLESONDEMAND.COM
866-223-2860

BAG LABEL DETAIL

- THIS DRAWING IS RESERVED FOR AMPHENOL CABLES ON DEMAND.
- PERMANENTLY MARK LABEL WITH INDICATED TEXT.
- ALL MATERIALS USED IN THE MANUFACTURE OF THIS ASSEMBLY SHALL COMPLY WITH AMPHENOL REGULATED MATERIALS SPECIFICATION CS-1152.
- TEST COMPLETED ASSEMBLIES PER AMPHENOL CS-1089. TEST ASSEMBLIES AT 10.31 Gbps AS NOTED IN P/N TABLE.
- SIMILAR TO AMPHENOL SPEC 59994XXXX.
- PROGRAM EPROM PER CS-1154. EPROM SERIAL No. MUST MATCH LABEL SERIAL No.
- INSTALL DUST CVR (ITEM 9) OVER CONNECTOR. COMPLETED ASSY SHALL BE PACKAGED IN AN APPROPRIATELY SIZED ANTI-STATIC BAG. PERMANENTLY LABEL BAG PER BAG LABEL DETAIL.



SPECIFICATION CONTROL DRAWING

| | | | | | |
|---------------------------------------------------------------------|--------|-----------------------|-------|----------------------------------------------------------------------------------|-----------------------|
| UNLESS OTHERWISE SPECIFIED DIMENSIONS ARE IN INCHES TOLERANCES ARE: | | EAR NO. | | Amphenol Interconnect Products Corp. 20 Valley St. Endicott, NY, 13760 | |
| DECIMALS | ANGLES | APPROVALS | DATE | | |
| .X ±.X | ± .5° | DRAWN D.CASHIMERE | 05/12 | ASSEMBLY, LOOPBACK, QSFP, W/MODSEL & POWER OPTIONS | |
| .XX ±.01 | | CHECKED | | | |
| .XXX ±.005 | | RESP ENG A.PERSAUD | 05/12 | SIZE C | DWG. NO. 61240XXXX |
| THIRD ANGLE PROJECTION | | MFG ENG | | REV. D | |