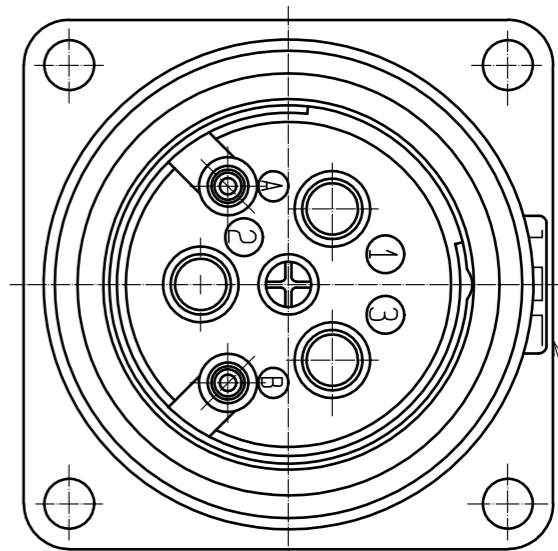
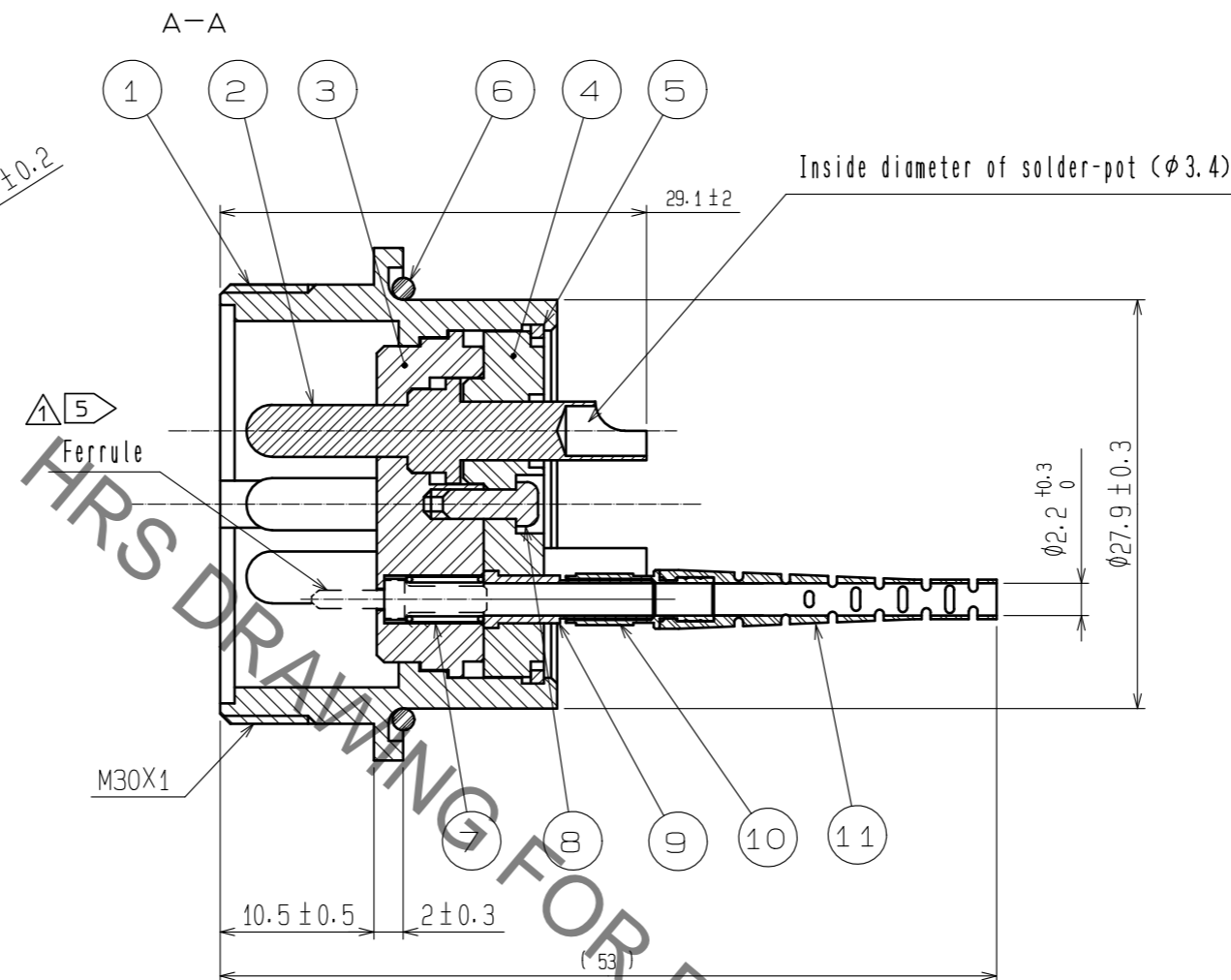
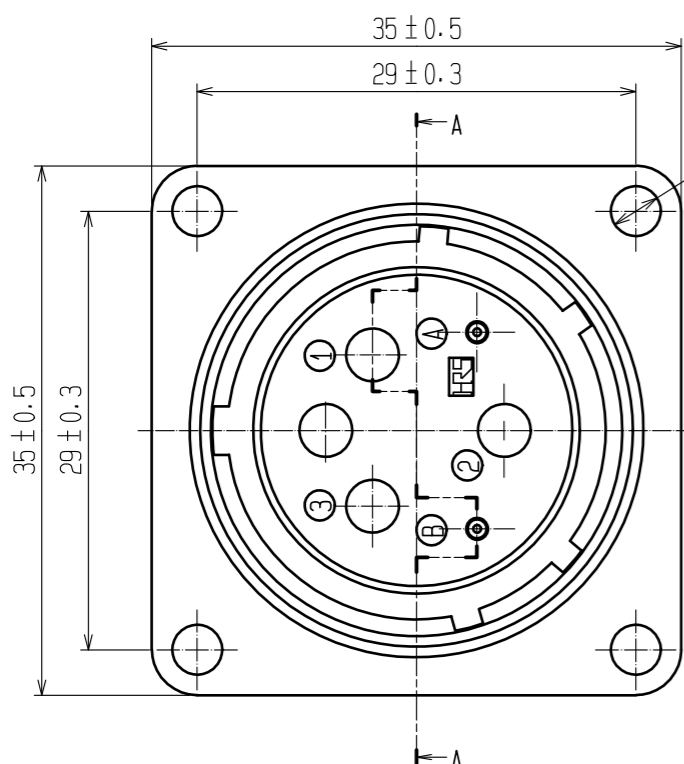
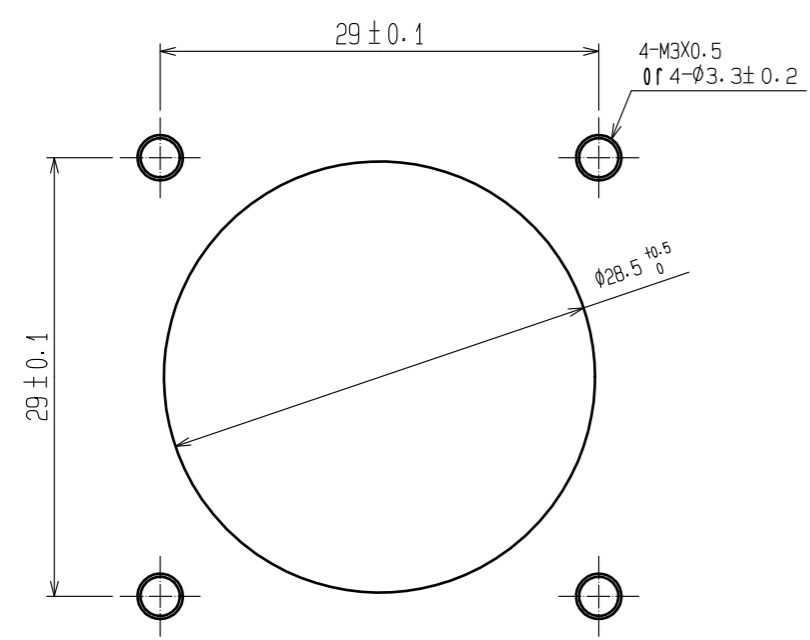


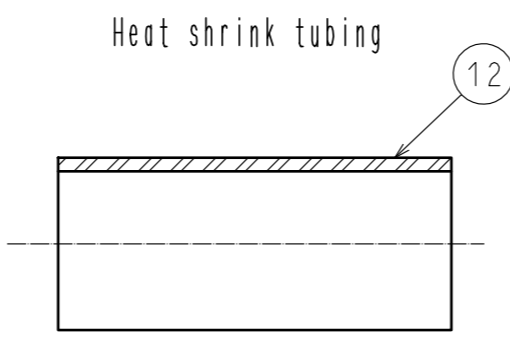
Jan.1.2022 Copyright 2022 HIROSE ELECTRIC CO., LTD. All Rights Reserved.
 In case of consideration for using Automotive equipment / device which demand high reliability, kindly contact our sales window correspondents.



The remainder mark of HRS



Panel installation size



Heat shrink tubing

- Note 1. This drawing shows the state of temporary assembly.
 2. The direction of Solder-pot(No.2) is one example.
 3. A product corresponding to Rohs.
 4. For assembling procedure, please contact our companies sales section and refer to procedure manual ETAD-K0222-00.
 5. The Ferrule is not included. Please use the MU ferrule, which is sold separately.

6	Silicon rubber	Black	12	Polyolefin	Black
5	Phosphor bronze	Nickel-plating	11	TPEE	Light purple
4	PPS	Black	10	Brass	Ni-plating
3	PPS	Black	9	Brass	Ni-plating
2	Brass	Ag-plating	8	Steel	Zn-plating
1	Aluminium	Black Cr-plating	7	Piano wire	Zn-plating
NO.	MATERIAL	FINISH . REMARKS	NO.	MATERIAL	FINISH . REMARKS

UNITS mm		SCALE 4 : 1	COUNT 4	DESCRIPTION OF REVISIONS DIS-K-00001733	DESIGNED BENJAMIN RILEY	CHECKED YY.HIYAMA	DATE 20181207
HRS HIROSE ELECTRIC CO., LTD.		APPROVED : HA. OKANO	20080619	DRAWING NO. EDC3-175972-00		PART NO. MF25S-WRF02-0203	
		CHECKED : KS. JOKURA	20080619	CODE NO. CL709-0208-6-00		1/1	
		DESIGNED : YH. MASUZAKI	20080616				
		DRAWN : YH. MASUZAKI	20080616				