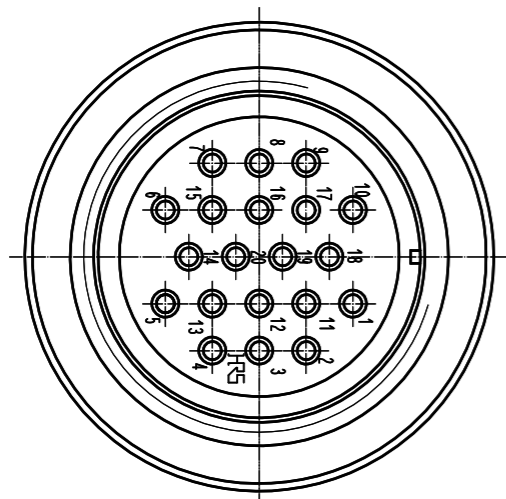
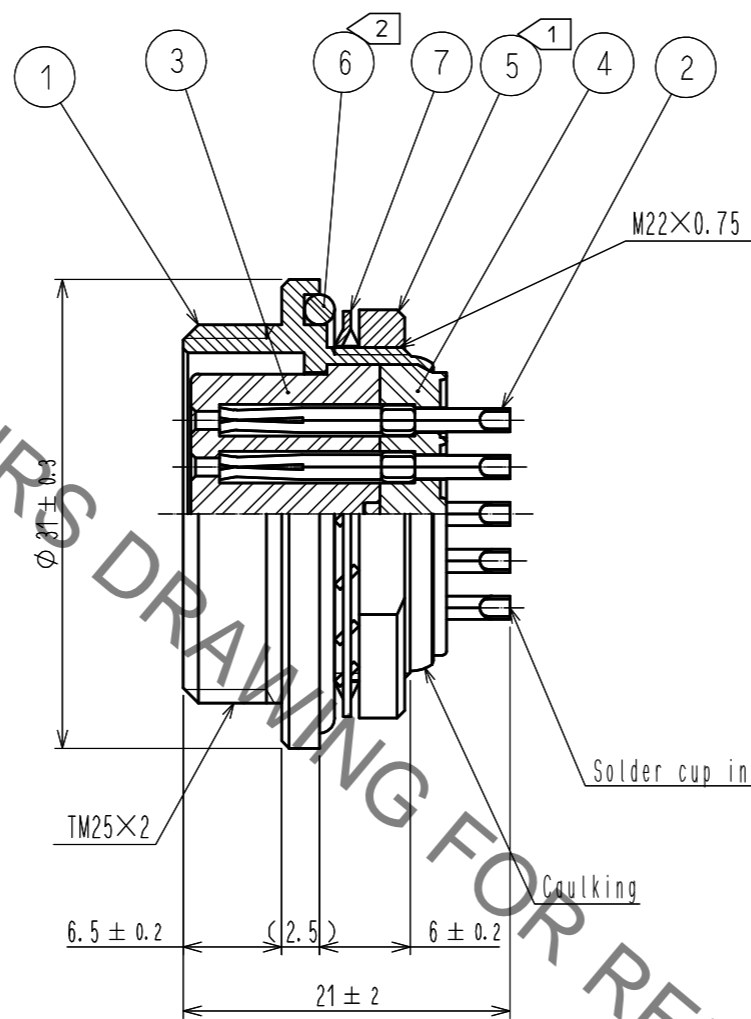
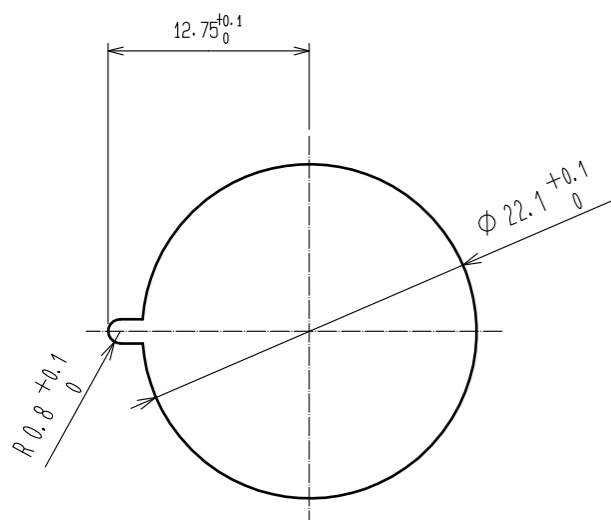


Jan.1.2022 Copyright 2022 HIROSE ELECTRIC CO., LTD. All Rights Reserved.
In case of consideration for using Automotive equipment / device which demand high reliability, kindly contact our sales window correspondents.



Panel cutout(2:1)
(Panel thickness : 2 max.)

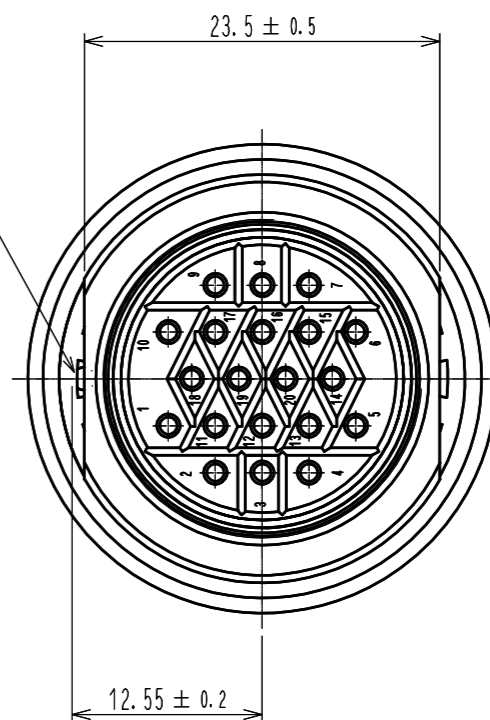


M22×0.75

Solder cup inside dia.(φ1.15)

Caulking

(φ1.5)



- Notes 1 The recommended tightening torque of ref.No. ⑤ shall be 4N·m.
LOCTITE 243, HENKEL JAPAN or equivalent is recommended
to prevent ref.No. ⑤ from loosening.
2 At the connector mount, ref.No. ⑥ O-RING.
Shall be attached without bite lump.

NO.	MATERIAL	FINISH . REMARKS	NO.	MATERIAL	FINISH . REMARKS
4	PPS	(Black) UL94V-0	7	Phosphor bronze	Nickel plating
3	PPS	(Black) UL94V-0	6	Chloroprene rubber	(Black)
2	Copper alloy	Silver plating 5μm min.	5	Brass	Nickel plating
1	Brass	Nickel plating			

UNITS mm		SCALE 2 : 1	COUNT 1	DESCRIPTION OF REVISIONS DIS-C-00007430	DESIGNED TY. SUZUKI	CHECKED HY. KOBAYASHI	DATE 20210803
HRS HIROSE ELECTRIC CO., LTD.		APPROVED : HY. KOBAYASHI	20180222	DRAWING NO. EDC-003648-31-00			
		CHECKED : HY. KOBAYASHI	20180222	PART NO. RM21WTR-20S(31)			
		DESIGNED : HY. KISHI	20180222	CODE NO. CL0109-1448-6-31			
		DRAWN : MK. INOUE	20180208			1/1	