

LTCC 低通滤波器 (Low Pass Filter)

HT-LFCG-1400+

Features

- Low insertion loss.
- Good rejection.
- LTCC Construction.
- temperature stable.
- Small size.

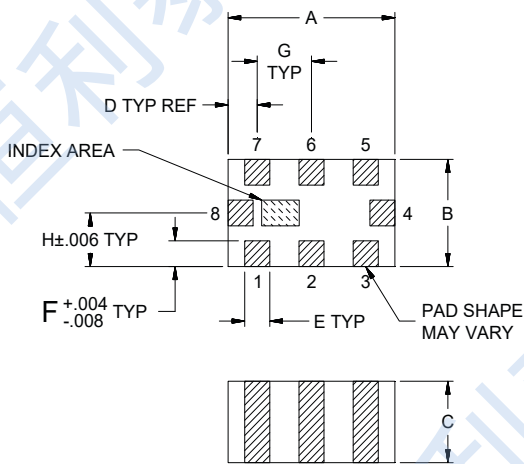
Applications

- Harmonic Rejection.
- VHF/UHF Transmitters / Receivers.
- RF Suppression for DC Lines on PCB.
- Anti-Aliasing for A/D Converter.

Pad Connections

RF IN	8
RF OUT	4
GROUND	1,2,3,5,6,7

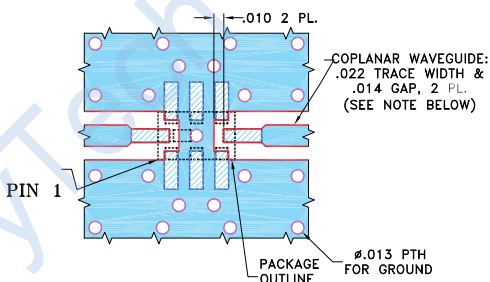
Outline Drawing



Outline Dimensions : inch mm

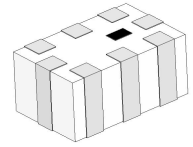
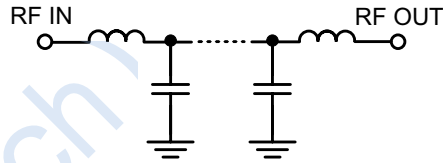
A	B	C	D	E	F	G	Wt.
.079	.049	.037	.014	.012	.012	.026	grams
2.00	1.25	0.95	0.35	0.30	0.30	0.65	.008

Suggested PCB Layout



- NOTES:**
1. COPLANAR WAVEGUIDE IS SHOWN FOR ROGERS RO4350B WITH DIELECTRIC THICKNESS .010" ± .001". COPPER: 1/2 OZ. EACH SIDE. FOR OTHER MATERIALS TRACE WIDTH AND GAP MAY NEED TO BE MODIFIED.
 2. BOTTOM SIDE OF THE PCB IS CONTINUOUS GROUND PLANE.
- DENOTES PCB COPPER LAYOUT WITH SMOBC (SOLDER MASK OVER BARE COPPER).
 - DENOTES COPPER LAND PATTERN FREE OF SOLDER MASK.

Functional Schematic



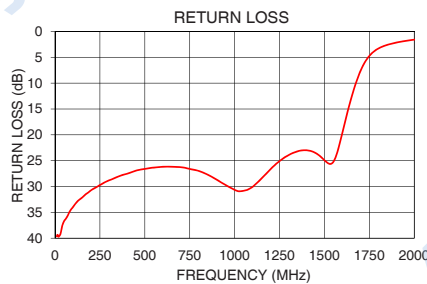
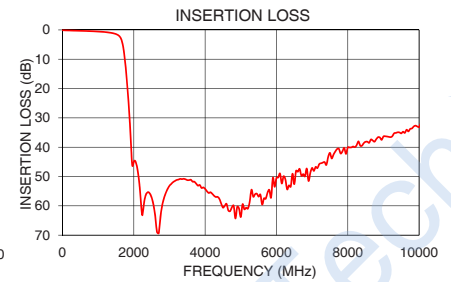
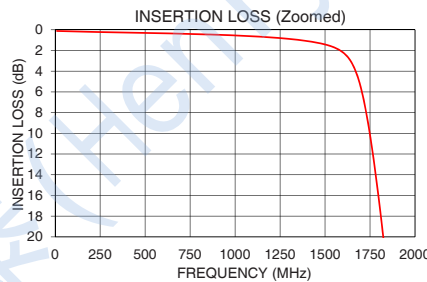
50 Ω
DC to 1400MHz

Electrical Specifications(1) at 25°C

Parameter	Frequency (MHz)	Min.	Typ.	Max.	Units	
Passband	Insertion Loss	DC-1400	—	1.0	1.9	dB
	Freq. Cut-Off	1650	—	3.0	—	dB
	Return Loss	DC-1400	—	22	—	dB
Stop Band	Rejection Loss	2015-2300	20	45	—	dB
		2300-6600	40	50	—	
		6600-10000	—	35	—	

1. In Application where DC voltage is present at either input or output ports, coupling capacitors are required.

Typical Performance Data at 25°C



Maximum Ratings

Operating Temperature	-55°C to +125°C
Storage Temperature	-55°C to +125°C
RF Power Input*	5.5W at 25°C

*Permanent damage may occur if any of these limits are exceeded.

Tel: +86-28-85589664

E-mail: mr_li@henglitaitech.com

Web: www.hltchips.com

Room 1401, 14th Floor, Building 5, Huaxi Science and Technology Innovation Center, No. 50, Shuixi Road, Jinniu District, Chengdu City