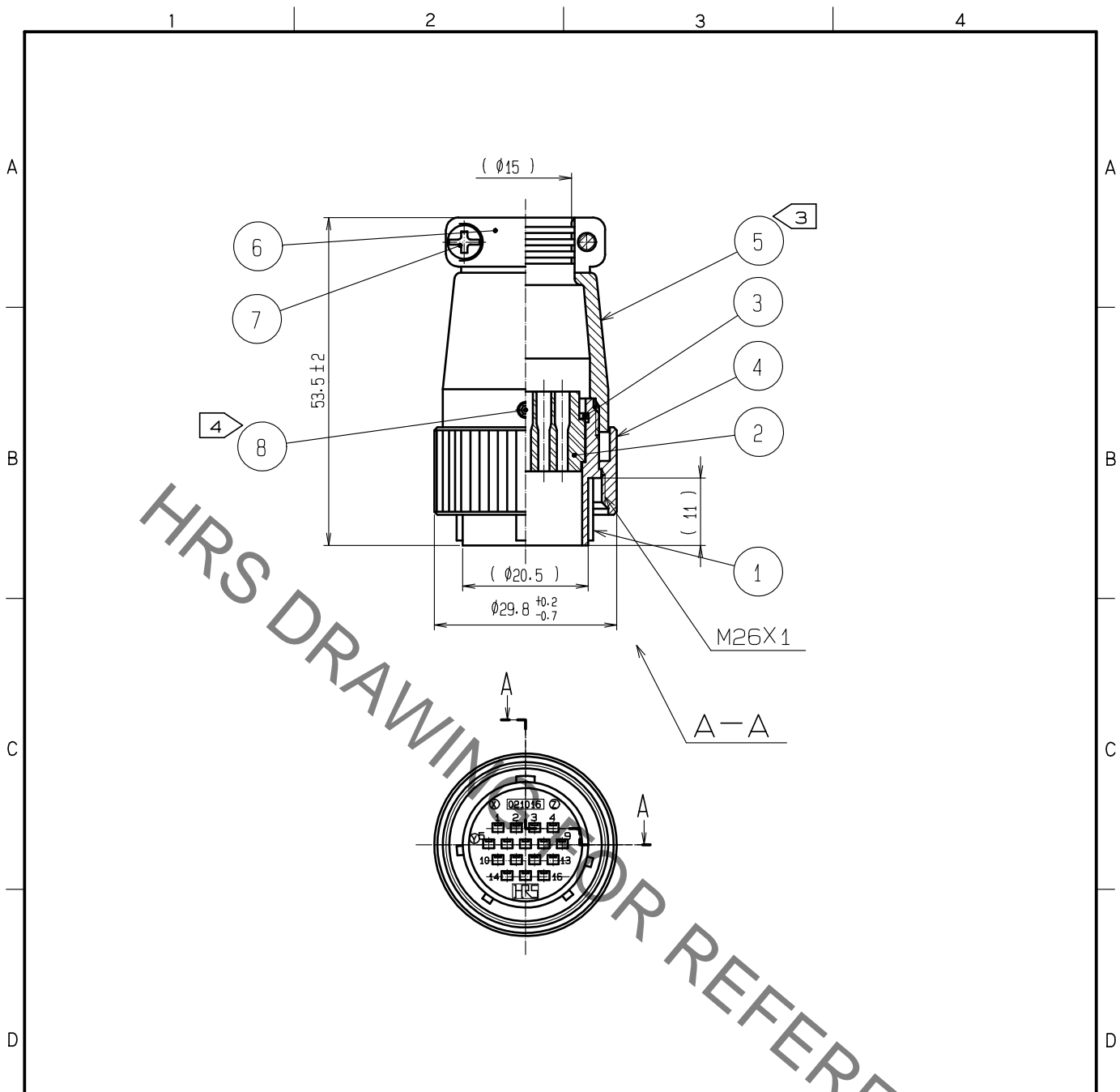


Jan.1.2022 Copyright 2022 HIROSE ELECTRIC CO., LTD. All Rights Reserved.
In case of consideration for using Automotive equipment / device which demand high reliability, kindly contact our sales window correspondents.



- NOTES
1. APPLICABLE CRIMPING CONTACT : JRC-PC2-212 (AWG#24 TO 20)
JRC-PC2-222 (AWG#28 TO 24)
 2. APPLICABLE CRIMP CONTACT EXTRACTION TOOL : RM-TP (CL150-0008-7)
 - ③ THE RECOMMENDED CLUMP TORQUE OF REF.NO.⑤ TO BE 4 TO 4.5N·m.
 - ④ ACROSS FLATS OF HEXAGON HEAD OF REF.NO.⑧ TO BE 1.27mm.
THE RECOMMENDED CLUMP TORQUE OF REF.NO.⑧ TO BE 0.3 TO 0.4N·m.
LOCTITE 243, HENKEL JAPAN IS RECOMMENDED TO PREVENT REF.NO.⑧ FROM LOOSENING.
 5. ROTATION EXAMPLES OF REF.NO.① AND ⑤ ARE SHOWN.
 6. THE CABLE PULL AND TWISTING AND OTHER CHARACTERISTICS MAY DIFFER, DEPENDING ON THE CABLE STRUCTURE.
PLEASE CONFIRM BEFORE THE USE.

4	ALUMINUM ALLOY	MATTE FINISH NICKEL PLATED	8	STEEL	NICKEL PLATING.	HEX SOCKET SET SCREW M2.6X0.45X2
3	PHOSPHOR BRONZE	NICKEL PLATING	7	BRASS	NICKEL PLATING	M3X0.5X10
2	POLYCARBONATE	(BLACK) UL94V-0	6	ALUMINUM ALLOY	MATTE FINISH NICKEL PLATED	
1	ALUMINUM ALLOY	MATTE FINISH NICKEL PLATED	5	ALUMINUM ALLOY	MATTE FINISH NICKEL PLATED	
NO.	MATERIAL	FINISH . REMARKS	NO.	MATERIAL	FINISH . REMARKS	

UNITS mm		SCALE 1 : 1	COUNT 	DESCRIPTION OF REVISIONS	DESIGNED	CHECKED	DATE
HRS HIROSE ELECTRIC CO., LTD.		APPROVED : EJ. KUNII	16.01.25	DRAWING NO.	EDC-029005-71-00		
		CHECKED : EJ. KUNII	16.01.25	PART NO.	JR21PK-16PC(71)		
		DESIGNED : TY. TAKAHASHI	16.01.25	CODE NO.	CL114-0572-5-71		
		DRAWN : TY. TAKAHASHI	16.01.25				1/1