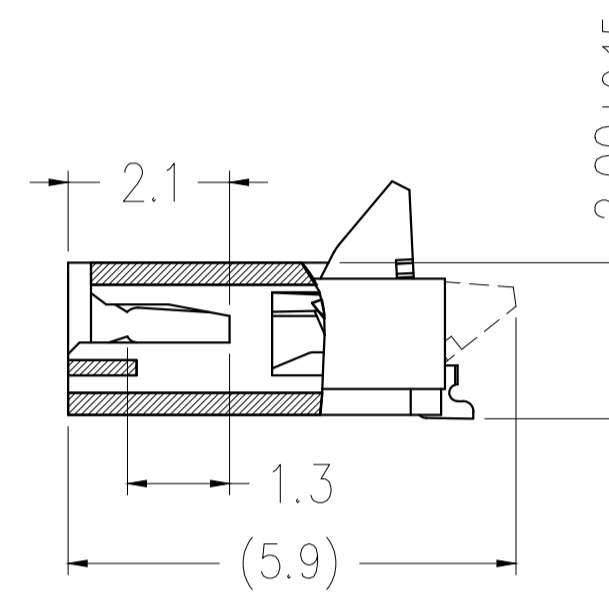
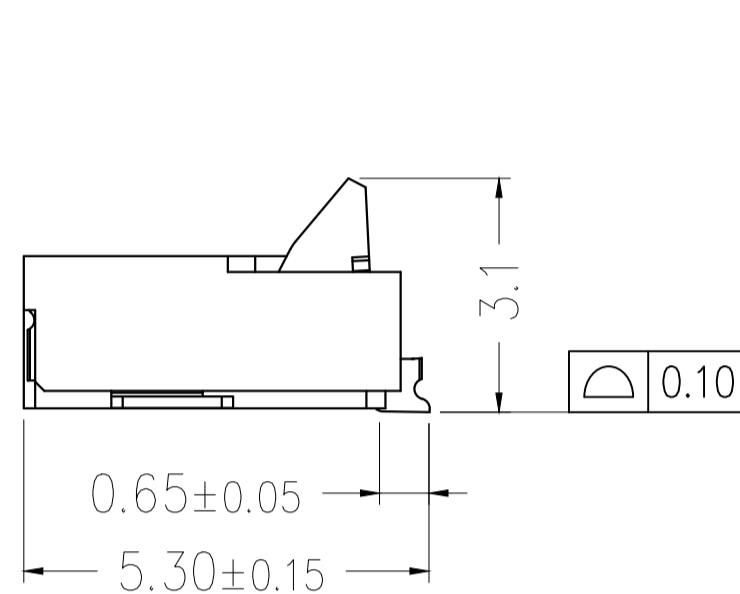
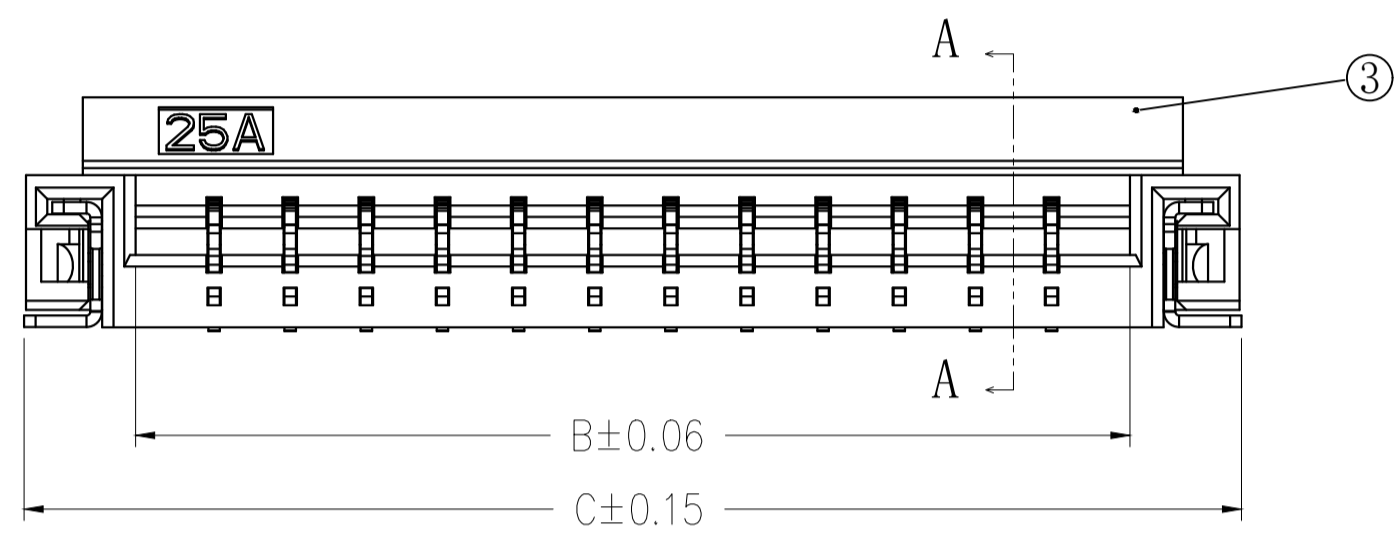
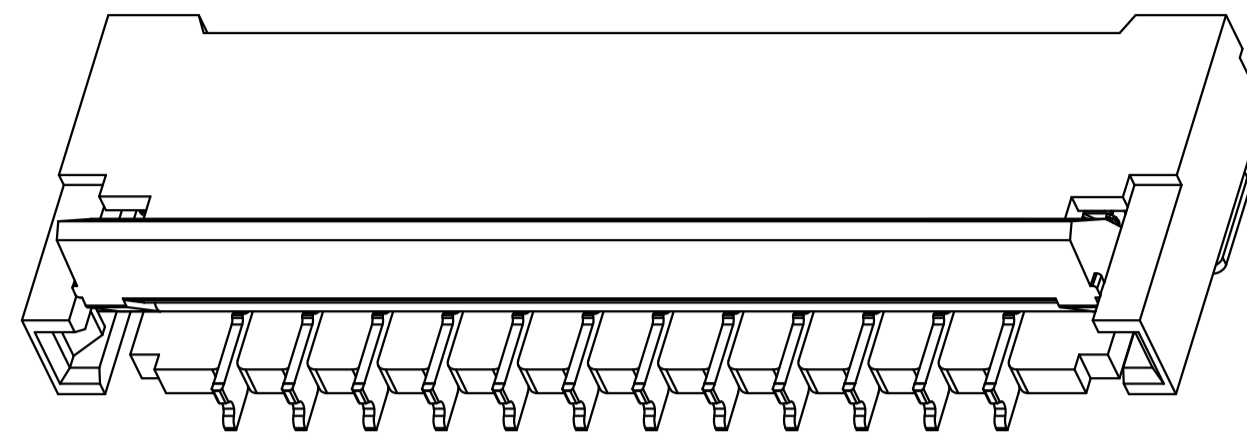
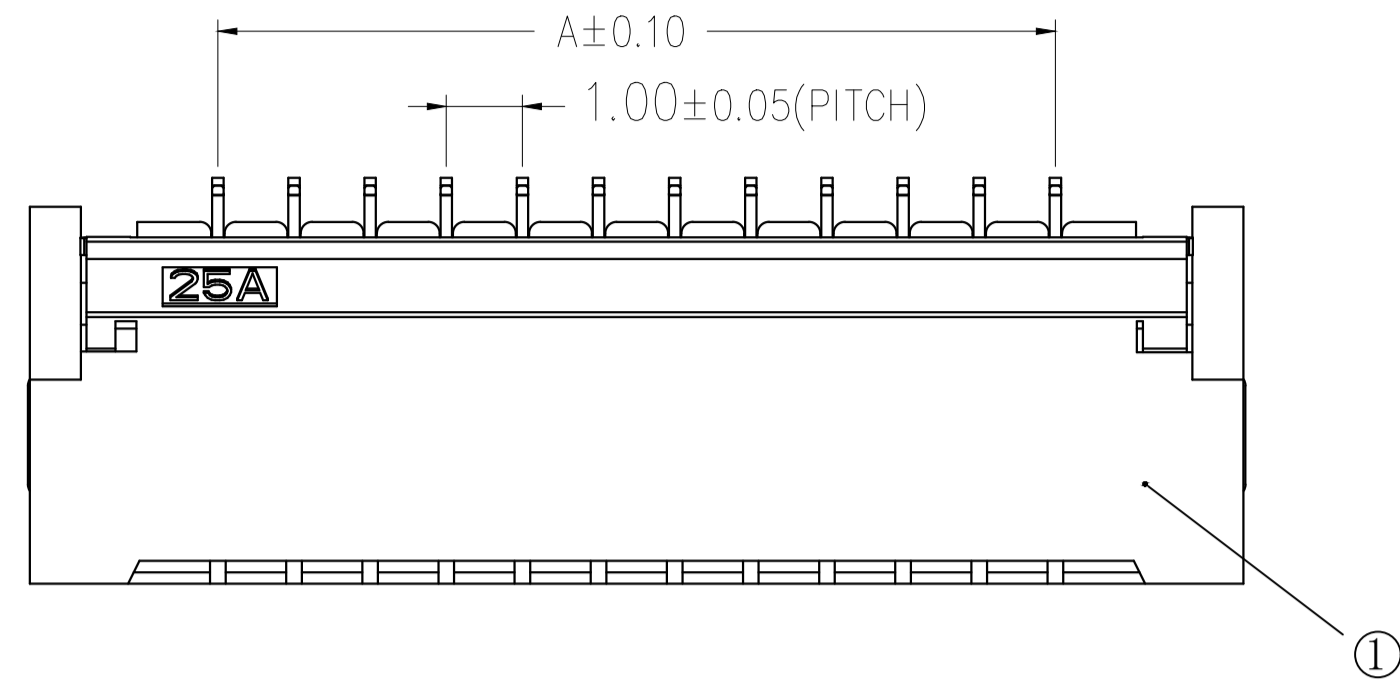
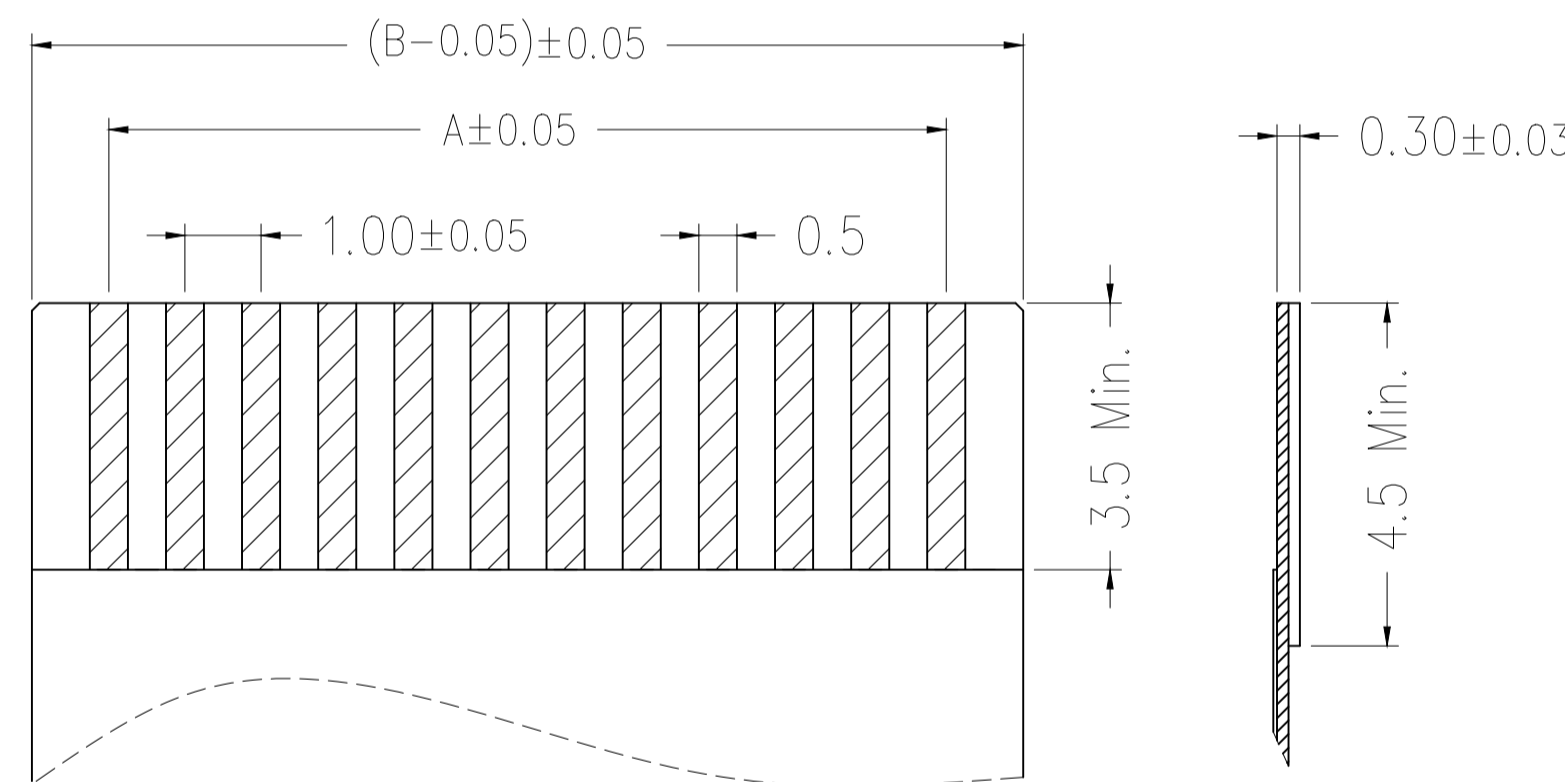
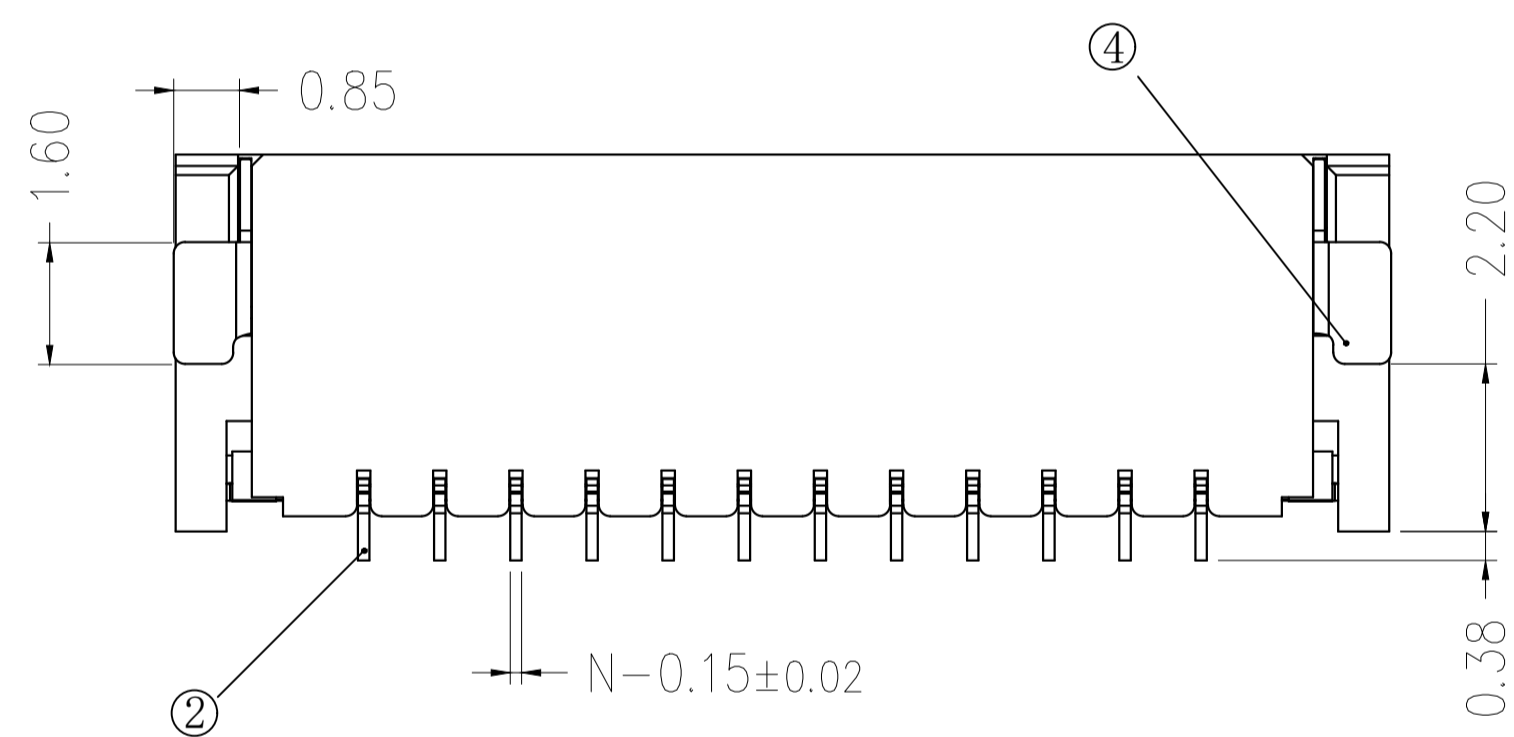


标记 MARK	ECN编号/变更内容 ECN NO/DEFINITION	修改 REVISE	日期 DATE	核准 APPROVE

CKI	DIM A	DIM B	DIM C
4	3.00	5.06	8.00
5	4.00	6.06	9.00
6	5.00	7.06	10.00
7	6.00	8.06	11.00
8	7.00	9.06	12.00
9	8.00	10.06	13.00
10	9.00	11.06	14.00
11	10.00	12.06	15.00
12	11.00	13.06	16.00
13	12.00	14.06	17.00
14	13.00	15.06	18.00
15	14.00	16.06	19.00
16	15.00	17.06	20.00
17	16.00	18.06	21.00
18	17.00	19.06	22.00
19	18.00	20.06	23.00
20	19.00	21.06	24.00
21	20.00	22.06	25.00
22	21.00	23.06	26.00
23	22.00	24.06	27.00
24	23.00	25.06	28.00
25	24.00	26.06	29.00
26	25.00	27.06	30.00
27	26.00	28.06	31.00
28	27.00	29.06	32.00
29	28.00	30.06	33.00
30	29.00	31.06	34.00



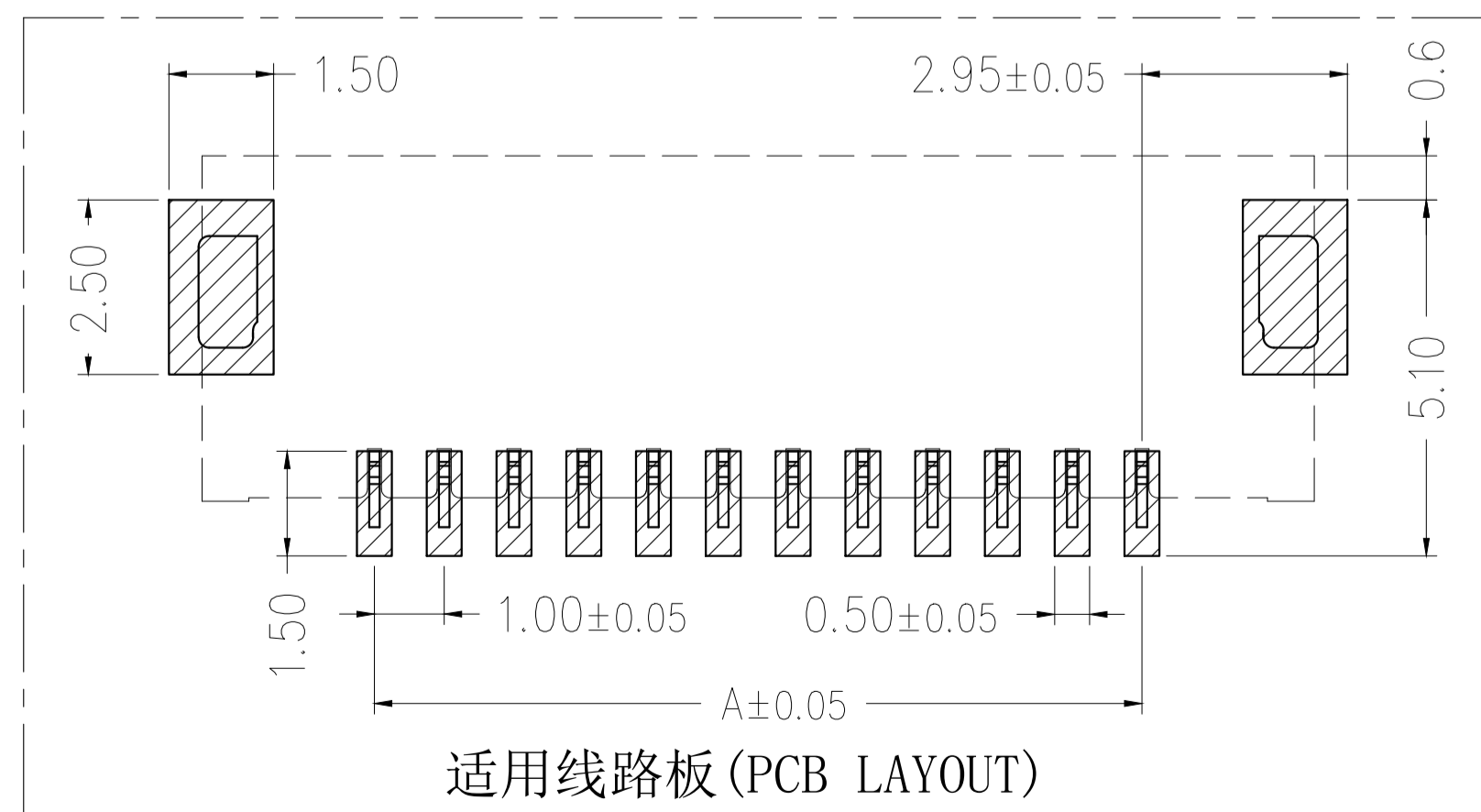
SECTION A-A



适用扁平线(Applicable Flat Cable)

技术指标:

1. 塑件表面应光洁、无毛边、无明显收缩、缺陷、裂纹等现象。(The surface of the plastic parts should be smooth, no rough edges, no obvious shrinkage, defects, cracks and other phenomena.)
2. 温度范围(Temperature range): -40° C~+85° C.
3. 额定电压(Rated voltage): 50V, AC/DC(=等效).
4. 接触电阻(Contact resistance): ≤0.03Ω.
5. 绝缘电阻(Insulation resistance): ≥500MΩ



适用线路板(PCB LAYOUT)

2	端子	铜	点镀金	
1	胶芯	LCP	黑色	
序号	品名	材质	电镀/颜色	备注

	深圳市虹成电子有限公司		品名 TITLE FPC座	
	料号 PART NO HC-FPC-1.0-4P-FHH20			
GENERAL TOLERANCES (UNLESS SPECIFIED)		比列 SCALE 1:1	单位 UNIT MM	制图 DRAW AhYe
X. ±.50 .XX ±.10 .X ±.20 .XXX ±.05	张数 PART NO 1 OF 1	版本 REV A	审核 CHECKED 夏操云	批准 APPROVE 赵亮亮
ANGLES ±1°				