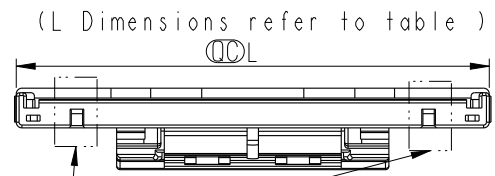
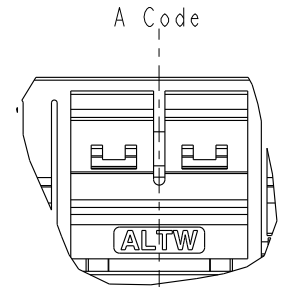


THIS DOCUMENT IS SUBJECT TO CHANGE WITHOUT NOTICE. IT IS CONFIDENTIAL AND A PROPERTY OF AMPHENOL LTW. DISCLOSURE TO THIRD PARTY HAS TO BE AUTHORIZED BY AMPHENOL LTW.

REV.	ECN NO.	DATE	SIGN	DESCRIPTION
A		2023/01/10	Xiaofeng	New Initial.

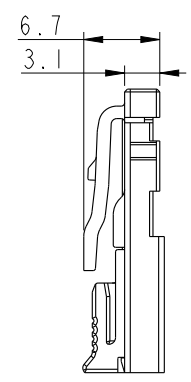
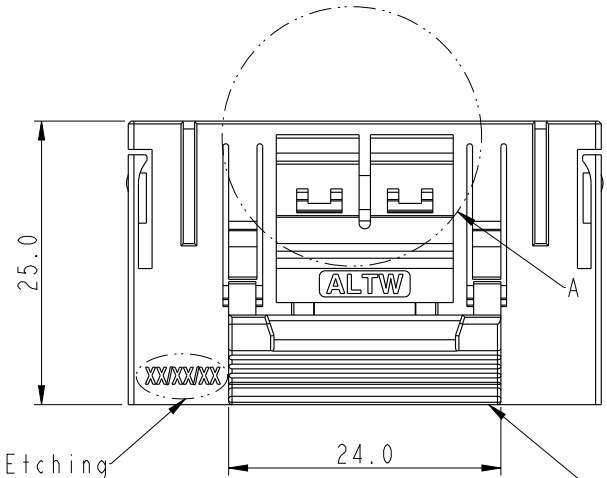


The prevention tilt insert structure is only available for 36 to 40 pin



A Code

Detail: A



Laser Etching Corresponding Pin Number

The secondary lock

Z2A1-XX NMAN-BN0001

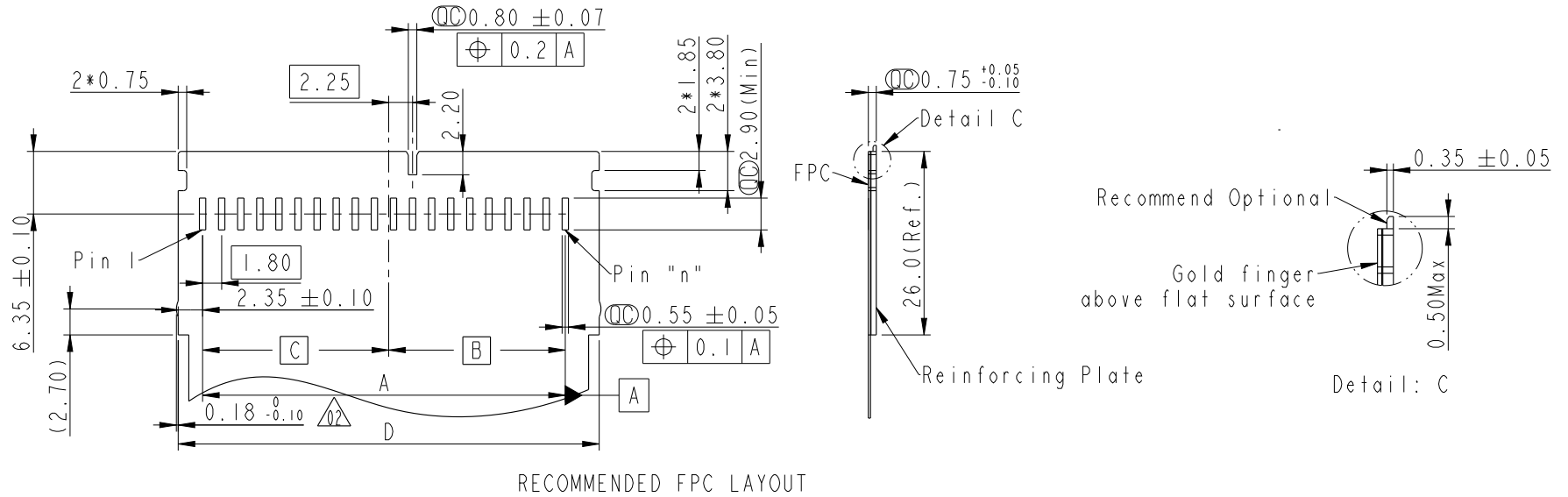
XX: Number Of Contacts (Pitch)
 AA: 40 (P0.9) / 20 (P1.8)
 AB: 38 (P0.9) / 19 (P1.8)
 AC: 36 (P0.9) / 18 (P1.8) / 12 (P2.7)

UNIT: mm	TOLERANCE		TITLE	
	.X	±0.25	Z CONN., N SHLD, M	
	.XX	±0.1	SCALE	1:1
.XXX	±0.05	SIZE	A4	SHEET 1 OF 5
ANGLES	±1°	REV.	A	WC-REV. .0
				☉: Inspection item

Amphenol LTW
 安費諾亮泰企業股份有限公司

ITEM NO	Z2A1-XXNMAN-BN0001	DRAWN BY	Xiaofeng	DATE	2023/01/10
DWG NO	Z2A1-XXNMAN-BN0001	CHECKED BY	Jerry	DATE	2023/01/10
CUSTOMER	ALTW	APPROVED BY	Max	DATE	2023/01/10

Flexible Printed Circuit
Pitch 1.8mm



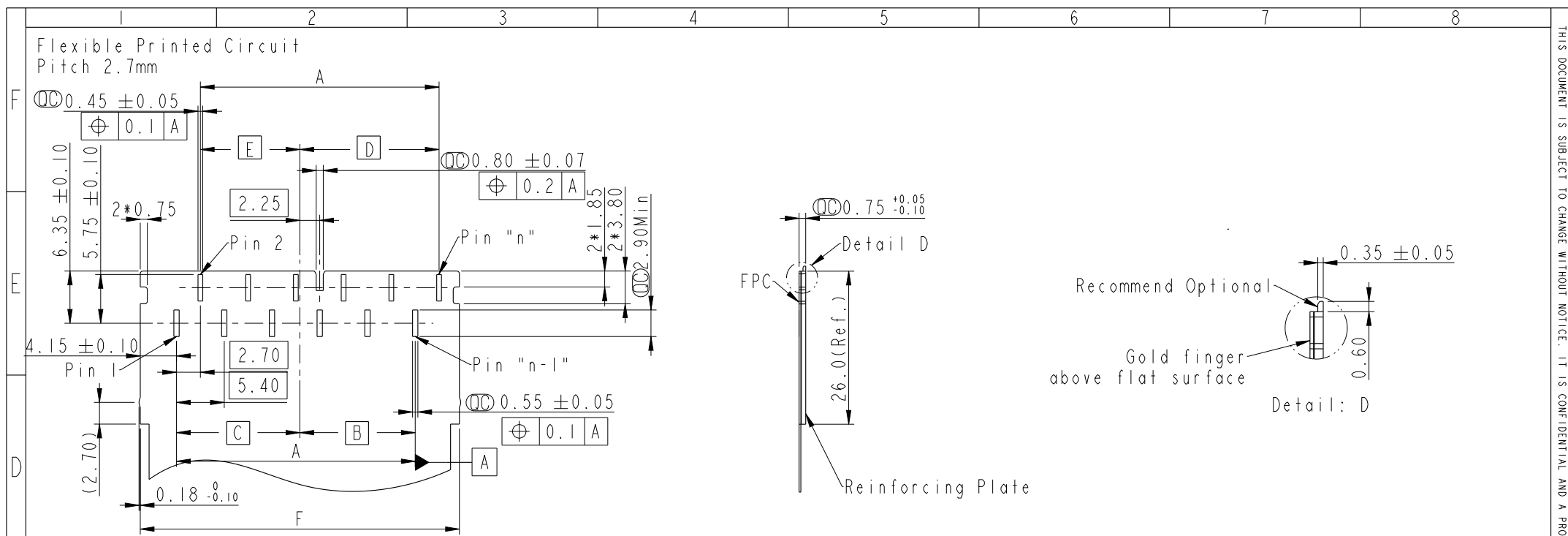
RECOMMENDED FPC LAYOUT

PIN	L (mm)	A (mm)	B (mm)	C (mm)	D (mm)
18	38.1	30.6	14.85	15.75	36.2
19	39.9	32.4	16.65	15.75	38.0
20	41.7	34.2	16.65	17.55	39.8

UNIT: mm TOLERANCE .X ±0.25 .XX ±0.1 .XXX ±0.05 ANGLES ±1°	TITLE Z CONN., N SHLD, M		Amphenol LTW 安費諾亮泰企業股份有限公司		ITEM NO	DRAWN BY Xiaofeng	DATE 2023/01/10
	SCALE 1:1	SIZE A4			SHEET 3 OF 5	DWG NO Z2AI-XXNMAN-BN0001	CHECKED BY Jerry
	REV. A	WC-REV. .0	Inspection item	CUSTOMER ALTW	APPROVED BY Max	DATE 2023/01/10	

THIS DOCUMENT IS SUBJECT TO CHANGE WITHOUT NOTICE. IT IS CONFIDENTIAL AND A PROPERTY OF Amphenol LTW. DISCLOSURE TO THIRD PARTY HAS TO BE AUTHORIZED BY Amphenol LTW.

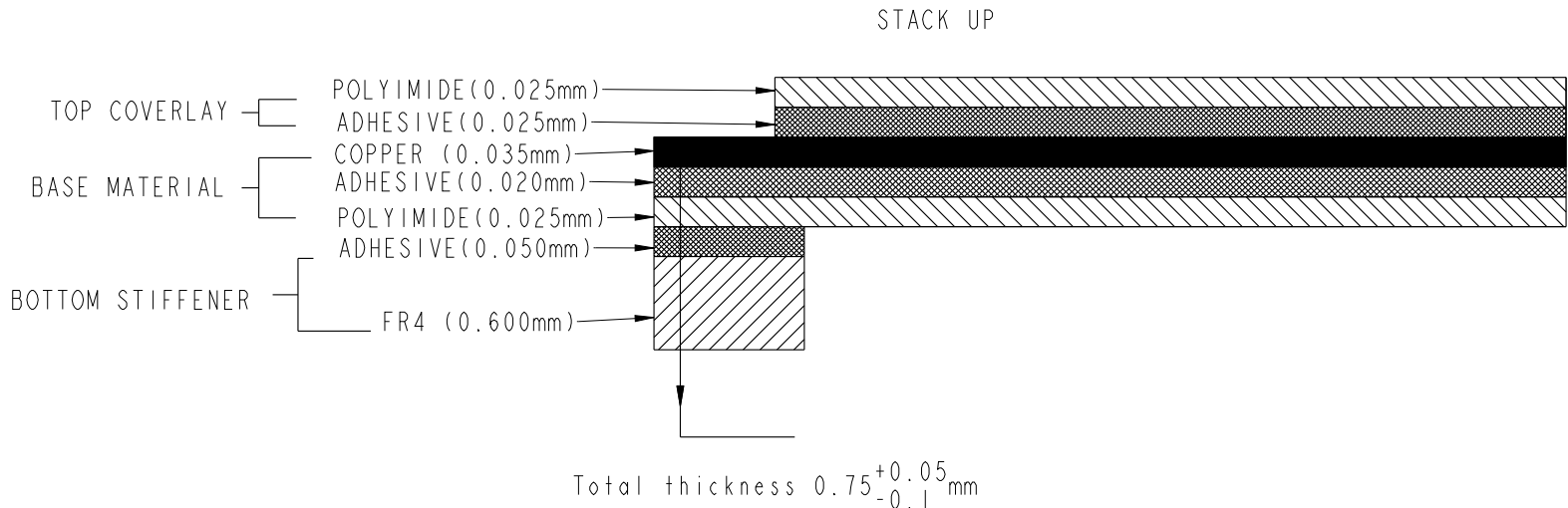
THIS DOCUMENT IS SUBJECT TO CHANGE WITHOUT NOTICE. IT IS CONFIDENTIAL AND A PROPERTY OF Amphenol LTW. DISCLOSURE TO THIRD PARTY HAS TO BE AUTHORIZED BY Amphenol LTW.



RECOMMENDED FPC LAYOUT

PIN	L(mm)	F(mm)	A(mm)	B(mm)	C(mm)	D(mm)	E(mm)
12	38.1	36.2	27.0	13.05	13.95	15.75	11.25

A	UNIT: mm	TITLE: Z CONN., N SHLD, M		<h1>Amphenol LTW</h1> <p>安費諾亮泰企業股份有限公司</p>		ITEM NO	DRAWN BY: Xiaofeng	DATE: 2023/01/10
	TOLERANCE .X ±0.25 .XX ±0.1 .XXX ±0.05 ANGLES ±1°	SCALE: 1:1	SIZE: A4			SHEET: 4 OF 5	DWG NO: Z2A1-XXNMAN-BN0001	CHECKED BY: Jerry
	REV. A	WC-REV. .0	QC: Inspection item		CUSTOMER: ALTW	APPROVED BY: Max	DATE: 2023/01/10	
							8 W10814-03-001A2	



Note:
 * CC Important Dimensions To Check.
 * Material: Thermoplastic, Black.
 * All Parts Are RoHS Compliant.

UNIT: mm 	Z CONN., N SHLD, M			Amphenol LTW 安費諾亮泰企業股份有限公司		ITEM NO Z2A1-XXNMAN-BN0001	DRAWN BY Xiaofeng	DATE 2023/01/10
	TOLERANCE .X ±0.25 .XX ±0.1 .XXX ±0.05 ANGLES ±1°	SCALE 1:1	SIZE A4	SHEET 5 OF 5	CC : Inspection item		CHECKED BY Jerry	DATE 2023/01/10
	REV. A	WC-REV. .0			CUSTOMER ALTW	APPROVED BY Max	DATE 2023/01/10	